

## PEMC MARKET ASSESSMENT HIGHLIGHTS

- The average demand and the reserve schedule, recorded at 2,158 MW during the week of 02 - 08 Oct 2023, was slightly higher than the previous week at 2,157 MW.
- The average effective supply during the week was 2,323 MW, lower than the 2,406 MW of the previous week. Ramping limitations were considered in the calculation of the effective supply.
  - The capacity on outage averaged at 797 MW, higher than last week's 573 MW. About 71% of the 797 MW involved Coal plants, while in terms of category, about 67% were Maintenance Outages.
- As a result, an average supply margin of 166 MW was observed during the week, which is lower by about 33.335% relative to the previous week. The supply deficit based on MMS solution was 59.1 MW on 06 October 2023 18:10. The average supply margin was 125.34 MW at peak intervals and 197.83 MW at off-peak intervals.
- Correspondingly, average GWAP was recorded to be higher at PHP 7,074/MWh from PHP 3,923/MWh last week..
  - No secondary price cap was imposed for this week
- The top 5 participant groups accounted for about 71% of the offered capacity. The Herfindahl-Hirschman Index (HHI) by participant group indicated moderately concentrated market based on the offered and registered capacities.
- The top 5 pivotal plants during the week were –
  - FDC MISAMIS CFTPP (about 90.03% of the time)
  - MALITA CFTPP (about 86.16% of the time)
  - SARANGANI CFTPP (about 79.22% of the time)
  - GN POWER KAUSWAGAN CFTPP (about 77.08% of the time)
  - THERMA SOUTH CFTPP (about 47.72% of the time)
- Based on the MMS Solution, the congested equipment during the week was Kidapawan\_Transformer 1 (0.05% of the time)

### OPA\_ANALYSIS

- Battery plants recorded intermittent offers of 20 MW from October 2 to 4.
- Hydro plants submitted lower capacity offer between October 2 to 8 due to plant outage.
- Coal plants submitted lower capacity offer on October 2 due to plant outage.
- Solar plants recorded highest nomination on October 3 and lowest on October 8.

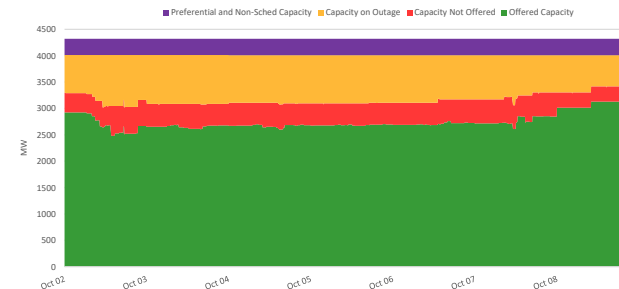
### IEMOP MARKET SYSTEMS ADVISORY

- No IT-related issue was advised in IEMOP's market systems from 02 - 08 Oct 2023.

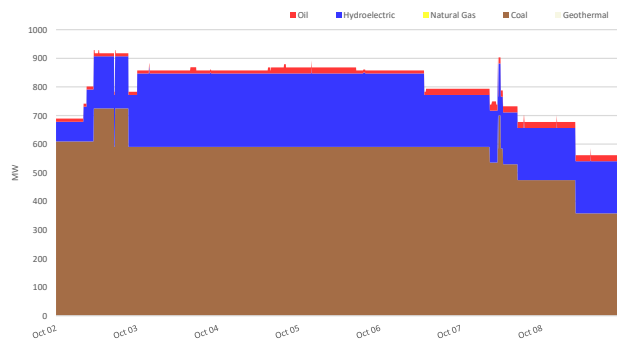
## SUMMARY (PRICE, SUPPLY, DEMAND AND RESERVE SCHEDULE)

Particulars		02 - 08 Oct 2023	Previous Week (25 Sep - 01 Oct 2023)	Percent Change
GWAP (PHP/MWh)	max	32,667.016	24,689.861	32.309%
	min	-9,808.988	-9,804.899	-0.042%
	ave	7,074.065	3,923.415	80.304%
Effective Supply (MW)	max	2,672.434	2,803.722	-4.683%
	min	1,919.273	1,895.240	1.268%
	ave	2,323.439	2,405.943	-3.429%
System Demand (MW)	max	2,455.360	2,357.350	4.158%
	min	1,443.340	1,432.420	0.762%
	ave	1,936.742	1,864.429	3.879%
Demand + Reserve Schedule (MW)	max	2,569.662	2,562.149	0.293%
	min	1,545.290	1,594.430	-3.082%
	ave	2,157.536	2,157.083	0.021%
Supply Margin (MW)	max	403.735	477.769	-15.496%
	min	-59.101	134.164	-144.051%
	ave	165.903	248.860	-33.335%

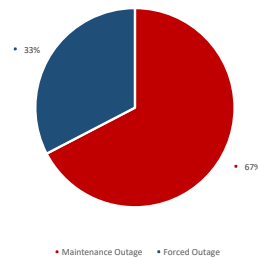
## CAPACITY PROFILE



## CAPACITY ON OUTAGE BY PLANT TYPE



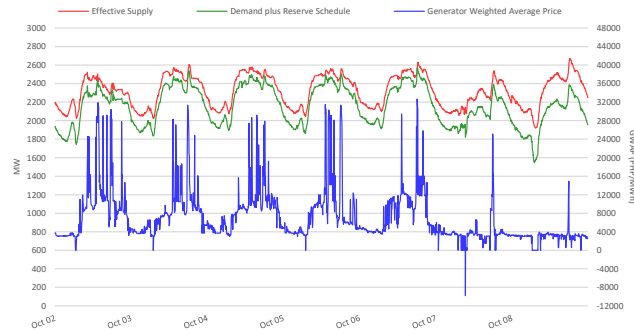
## CAPACITY ON OUTAGE BY OUTAGE CATEGORY



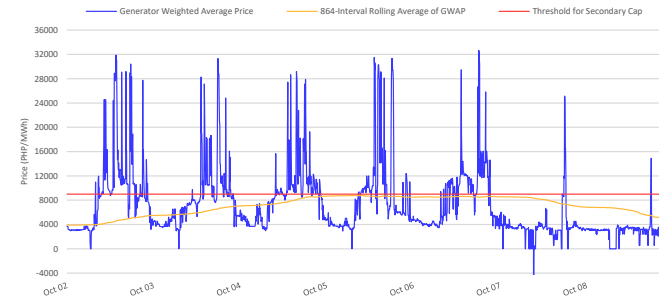
## RTD CONGESTION



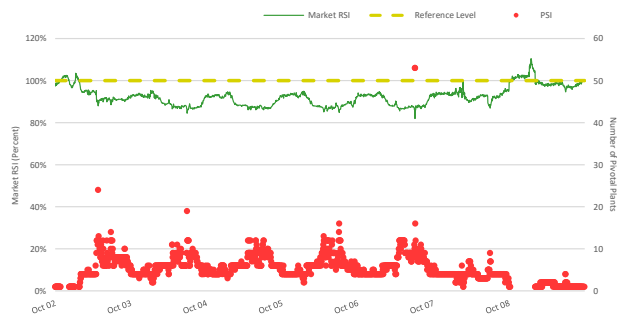
## SUPPLY, DEMAND AND PRICE



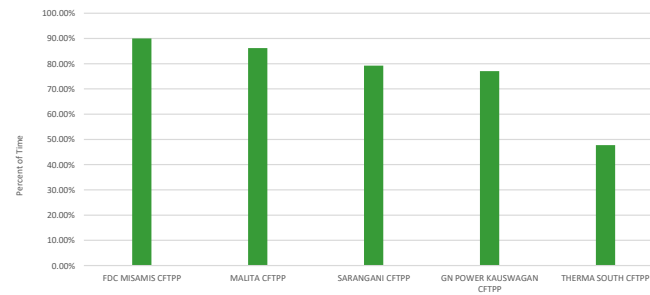
## GENERATOR WEIGHTED AVERAGE PRICE



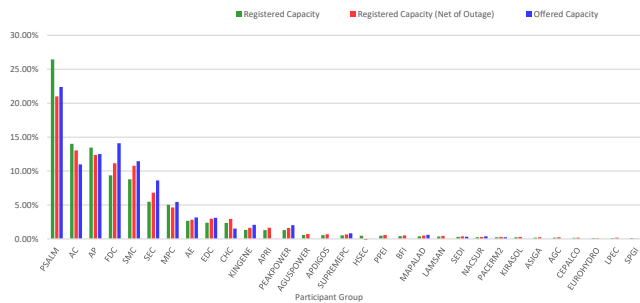
## MARKET RSI VS PIVOTAL PLANTS



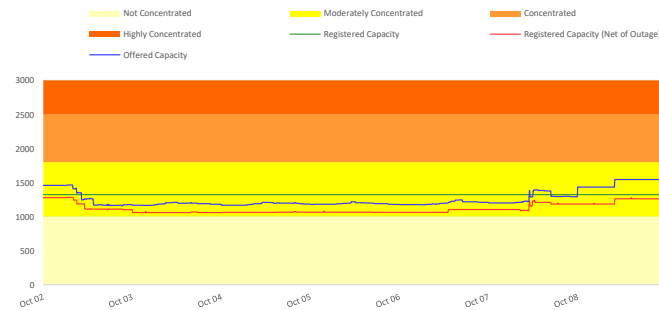
## PSI



## MARKET SHARE

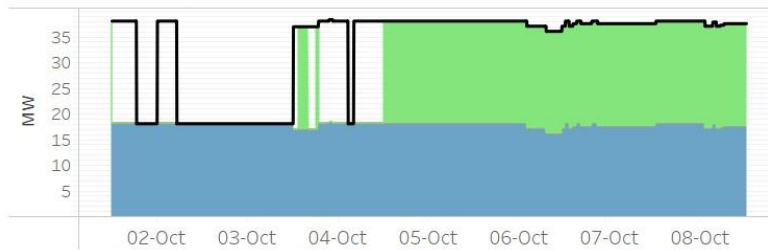


## HERFINDAHL-HIRSCHMAN INDEX

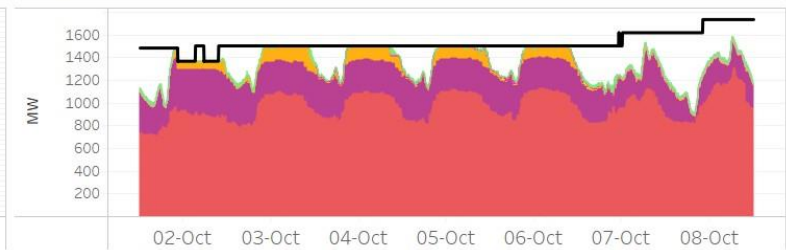


**OFFER PATTERN ANALYSIS**

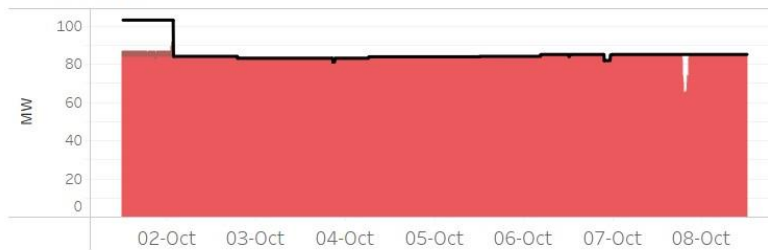
**BATTERY AND BIOFUEL**



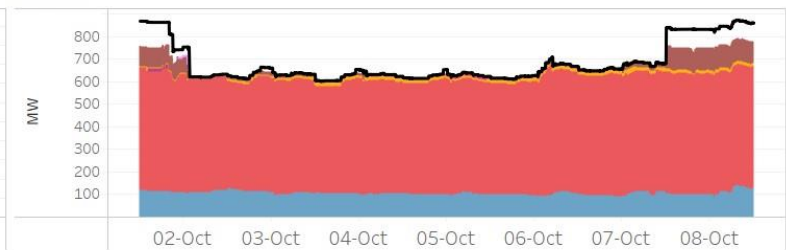
**COAL**



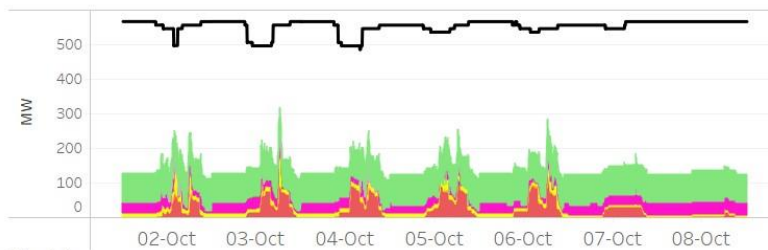
**GEO THERMAL**



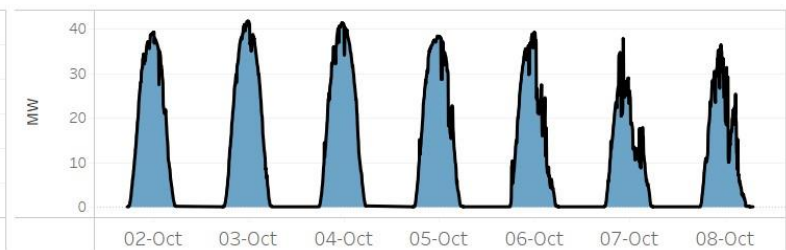
**HYDRO**



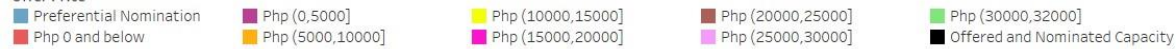
**OIL-BASED**



**SOLAR**



**Offer Price**



**Notes:**

1. In Php (X, Y], it includes offer price greater than Php X but less than or equal to Php Y.
2. Reflected capacity includes offered capacity of all scheduled generators, nominated loading level of nonscheduled generators and projected output of preferential dispatch generators adjusted based on submitted ramp rate limitations.

**GLOSSARY OF TERMS**

**EFFECTIVE SUPPLY** - The effective supply is equal to the offered capacity of all scheduled generator resources, nominated loading level of non-scheduled generating units and projected output of preferential dispatch generating units, adjusted for any security limit provided by the System Operator and other constraints considered during MMS simulation such as generator offered ramp rates. Scheduled output of plants on testing and commissioning through the imposition of security limit by SO and scheduled output of Malaya plant when it is called to run as Must Run Unit (MRU) are likewise accounted for in the effective supply.

**MARKET RESIDUAL SUPPLY INDEX (Market RSI)** - The RSI is a dynamic continuous index measured as ratio of the available generation without a generator to the total generation required to supply the demand. The RSI is measured for each generator. The greater the RSI of a generator, the less will be its potential ability to exercise market power and manipulate prices, as there will be sufficient capacity from the other generators. In contrary, the lower the RSI, the greater the market power of a generator (and its potential benefit of exercising market power), as the market is strongly dependent on its availability to be able to fully supply the demand. In particular, a RSI greater than 100% for a generator means that the remaining generators can cover the demand, and in principle that generator cannot manipulate market price. On the other hand, a RSI less than 100% means that the generator is pivotal in supplying the demand.

The RSI for the whole market (Market RSI) is measured as the lowest RSI among all the generators in the market. A Market RSI less than 100% indicates the presence of pivotal generator/s.

**MARKET SHARE** - The fraction of the total capacity or energy that a company or related group owns or controls in the market.

**MAJOR PARTICIPANT GROUP** - The grouping of generators by ownership or control.

**PIVOTAL SUPPLIER INDEX (PSI)** - The pivotal supplier index is a binary variable (1 for pivotal and 0 for not pivotal) for each generator. The index identifies whether a generator is pivotal in supplying the demand. The PSI is calculated as the percentage of time that a generator is pivotal in a period (i.e. monthly).

**HERFINDAHL-HIRSCHMAN INDEX (HHI)** - is a commonly accepted measure of market concentration that takes into account the relative size and distribution of participants in the market. The HHI is a number between 0 and 10,000, which is calculated as the sum of squares of the participant's market share. The HHI approaches zero when the market has very large number of participants with each having a relatively small market share. In contrary, the HHI increases as the number of participants in the market decreases, and the disparity in the market shares among the participants increases. The following are the widely used HHI screening numbers: (1) less than 1,000 - not concentrated; (2) 1,000 to 1,800 - moderately concentrated; (3) greater than 1,800 - concentrated; and (4) greater than 2,500 - highly concentrated.

**REGISTERED CAPACITY** - The capacity registered by a generator with WESM.

**REGISTERED CAPACITY (NET OF OUTAGE)** - The capacity registered by a generator with WESM less capacity on outage.

**OFFERED CAPACITY** - The offer to supply electricity submitted by a generator.

DISCLAIMER: The information contained in this document is based on the available electricity spot market data. The same information is subject to change as updated figures come in. As such, the PEMC does not make any representation or warranty as to the completeness of this information. The PEMC likewise accepts no responsibility or liability whatsoever for any loss or cost incurred by a reader arising from, or in relation to, any conclusion or assumption derived from the information found herein.